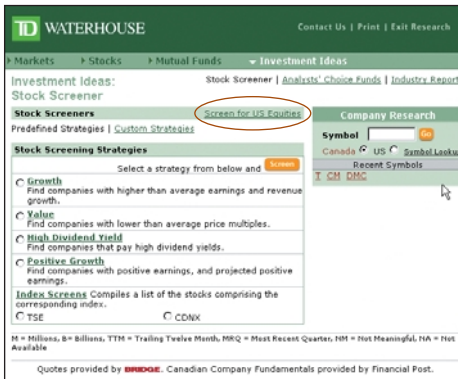


F O C U S O N R E S E A R C H

Stock Screeners

In the world of equity investing, Stock Screeners help you research and identify stocks that meet certain fundamental financial criteria and investment strategies. Within the new “Markets & Research” section of the recently enhanced WebBroker®, TD Waterhouse offers Stock Screener strategies that are predefined or you can customize to suit your investment needs.

To locate the Stock Screeners, login to WebBroker, click on Markets & Research and then click on Investment Ideas.



There are two full sets of screeners – one for Canadian equities and one for US equities.

Predefined Strategies

As illustrated above, there are five key predefined stock screening strategies to match your investment goals or objectives: Growth, Value, High Dividend Yield, Positive Growth, and TSE & CDNX indices. (A separate screen for U.S. equities offers you choices among U.S. indices.)

Based on the strategy you select, the Stock Screen analyzes all stocks in Canadian (or U.S.) markets and compiles a list of equities that meet the predefined fundamental criteria. For example, if you are interested in a “Growth Strategy,” the Stock Screen will identify equities that provide a return on equity greater than 15%¹ and a stock price greater than \$10. The following screen shot shows that 140 stocks met these criteria on the day the search was done.

The table illustrated, details the fundamental criteria used for each investment strategy for Canadian equities, enabling you to focus on stocks that meet your investment strategies and reduce the amount of research necessary to make investment choices.

The screenshot shows the 'Growth Strategy Results' table with columns for Symbol, Company, Price, P/E, Return on Equity, and Stock Price. A red circle highlights the 'Returned 1 - 25 of 140' message.

Symbol	Company	Price	P/E	Return on Equity	Stock Price
B	Abitibi-Consolidated Inc.	11.33	0.0	16.0%	11.30
ATX	Aastra Technologies Limited	9.50	0.0	26.9%	10.45

Index Screeners

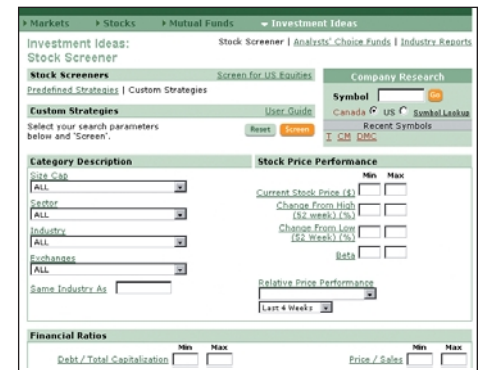
If you are interested in investing in companies included in the TSE or CDNX in Canada, or Dow Jones, Nasdaq, S&P 500 or S&P 400 MidCap indices in the U.S., the index screeners can help you make informed choices.

Customized Screeners

As illustrated to the right, you can create your own customized stock screeners by selecting specific fundamental criteria to match your investment

strategies, including:

- Category Description (by capitalization size, sector, type of industry, exchange)
- Minimum & Maximum Financial Ratios (debt/total capitalization, dividend yield, operating margin, price/book, price/cash flow, profit margin)
- Stock Price Performance (minimum and maximum for current stock price, change from high over 52 weeks, change from low over 52 weeks, and Beta)



	Canadian Equities	U.S. Equities
Predefined Stock Screener by investment strategy	Fundamental criteria (stock screeners)	Fundamental criteria (stock screeners)
Growth	<ul style="list-style-type: none"> • Return on Equity greater than 15% • Stock price greater than \$10 	<ul style="list-style-type: none"> • Historical EPS² growth greater than or equal to 15% (last quarter compared to same quarter one year ago) • Projected EPS growth of at least 15% (this year over last actual) • Historical Revenue Growth of at least 15% (over last four quarters) • Return on equity greater than 15%. Stock price greater than \$10
Value	<ul style="list-style-type: none"> • Price/Earnings less than 15 (over last 12 months) • Price/Book less than 1.0 • Price/Sales less than 1.5 • Stock price greater than \$10 	<ul style="list-style-type: none"> • Price/Earnings less than 15 (Over last 12 months) • Price/Book less than 1.0 • Price/Sales less than 1.5 • Stock price greater than \$10
High Dividend Yield	<ul style="list-style-type: none"> • Dividend yield of at least 4% • Stock price greater than \$10 	<ul style="list-style-type: none"> • Dividend yield of at least 4% • Stock price greater than \$10
Positive Growth	<ul style="list-style-type: none"> • Profit margin greater than 0 • Stock price greater than \$10 	<ul style="list-style-type: none"> • Profit margin greater than 0 • Positive EPS for the last 4 quarters • Projected positive EPS for the next quarter • Stock price greater than \$10

¹Based on return on average common equity over trailing 12 months

²Fundamental data for Canadian equities provided by Financial Post and by Market Guide for U.S. equities